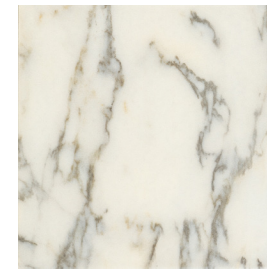




# RITMO

## Pattern Layout Guide

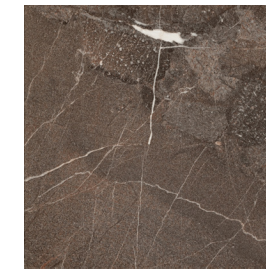
creative  
materials  
corporation



Paonazzo



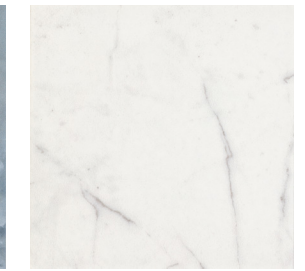
Amazonite



Imperial Brown



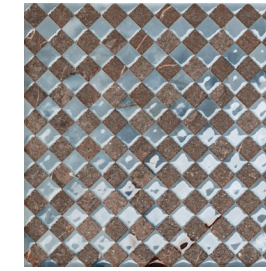
Blue Onyx



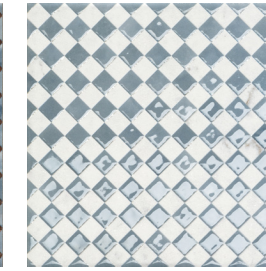
Statuario



Amazonite Microgrid



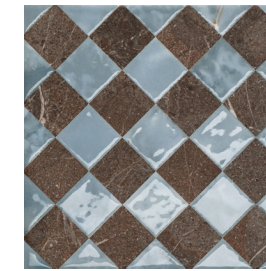
Imperial Brown Microgrid



Statuario Microgrid



Amazonite Macrogrid



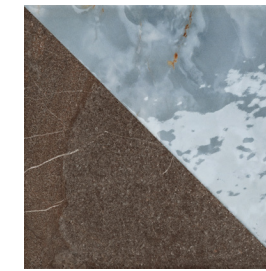
Imperial Brown Macrogrid



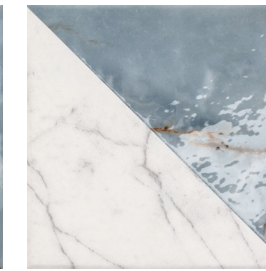
Statuario Macrogrid



Amazonite Triangle



Imperial Brown Triangle



Statuario Triangle



Amazonite Axis



Imperial Brown Axis

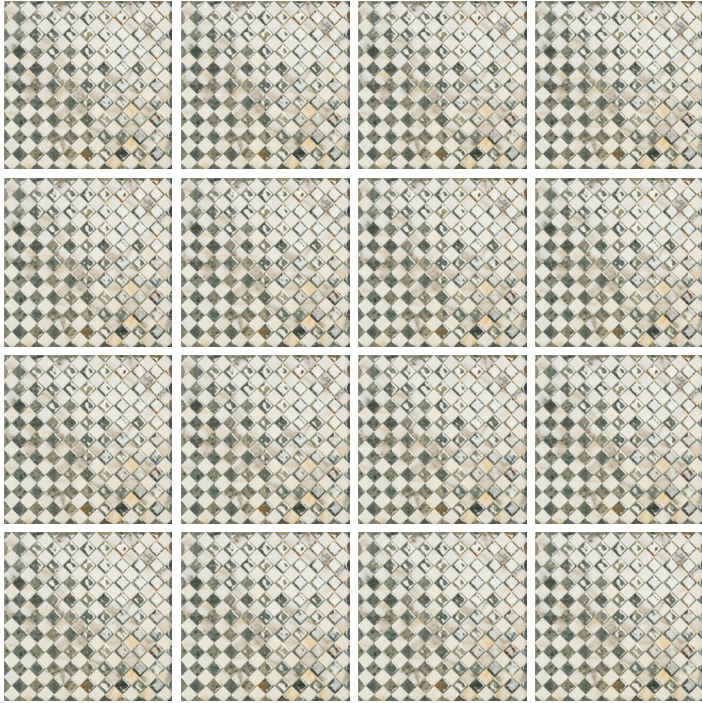


Statuario Axis

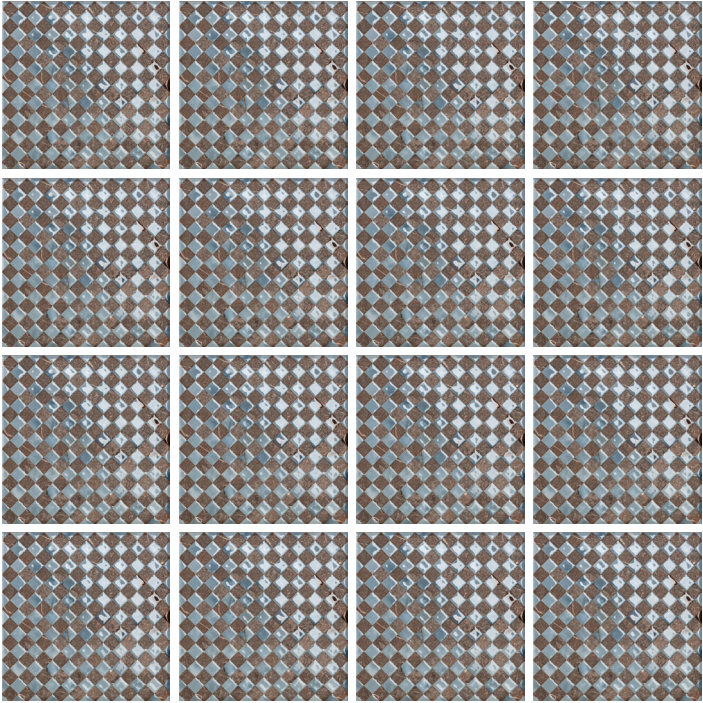


Array

# Pattern Layout Examples

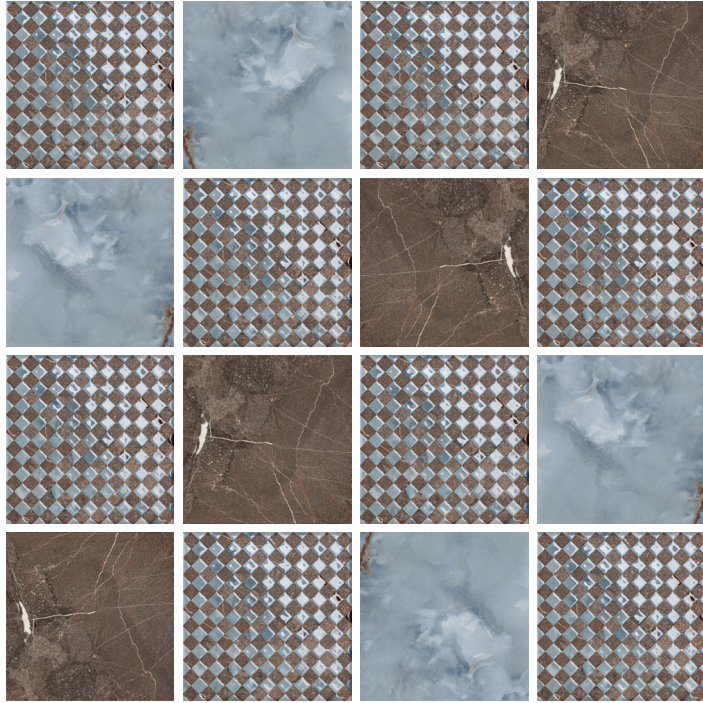


**One Color | Amazonite Microgrid**  
100%  
Straight Lay

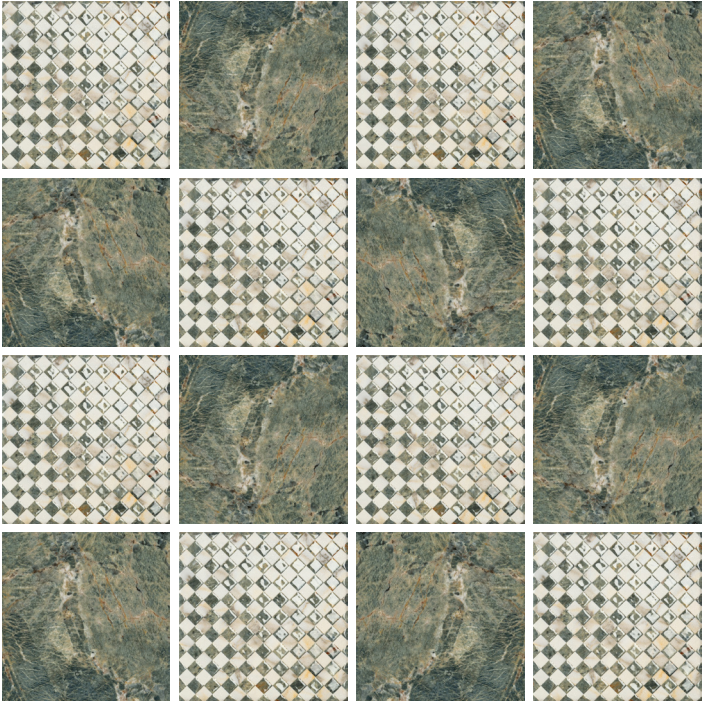


**One Color | Imperial Brown Microgrid**  
100%  
Straight Lay

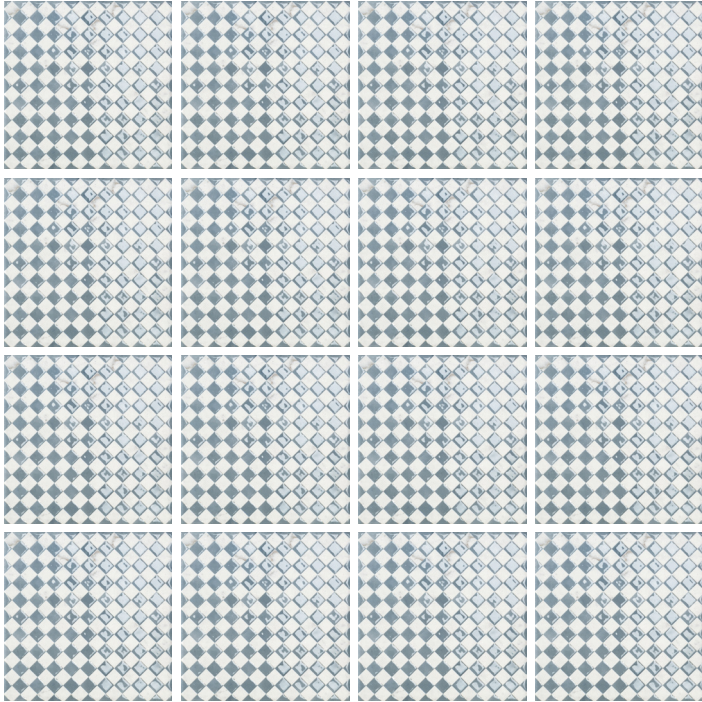
# Pattern Layout Examples



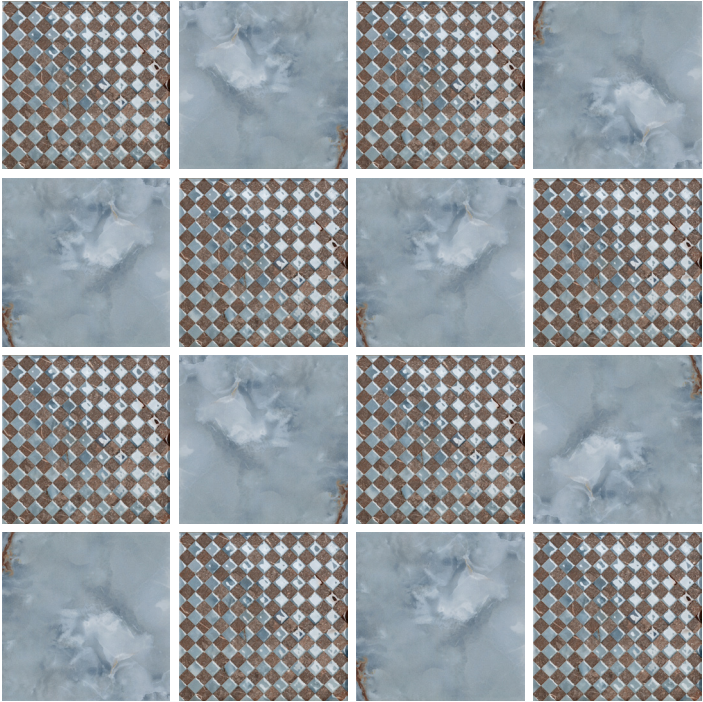
**Three Color | Blue Onyx, Imperial Brown, Microgrid**  
Color 1 Solid • 33% Color 2 Solid • 33% Microgrid • 33%  
Diagonal Checkerboard



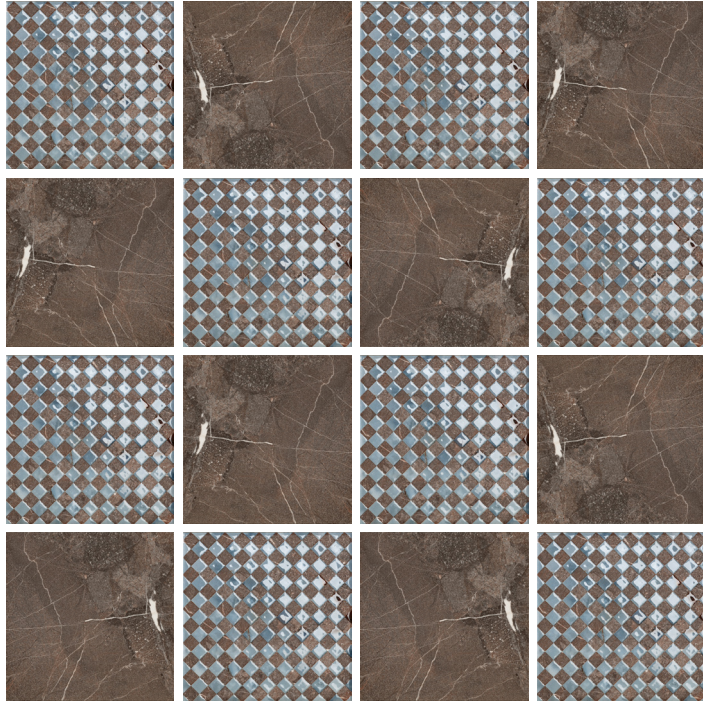
**Two Color | Amazonite & Amazonite Microgrid**  
Solid • 50% Microgrid • 50%  
Checkerboard



**One Color | Statuario Microgrid**  
100%  
Straight Lay



**Two Color | Blue Onyx & Imperial Brown Microgrid**  
Solid • 50% Microgrid • 50%  
Checkerboard

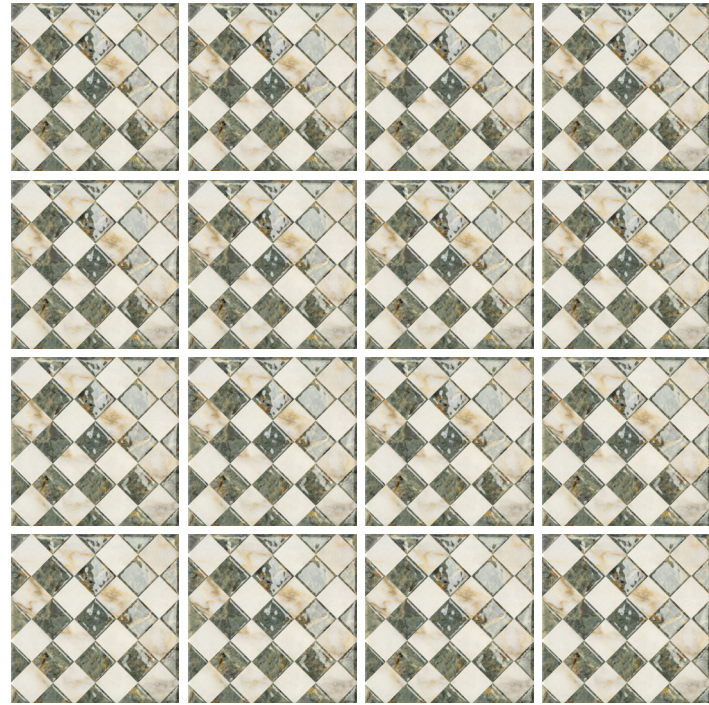


**Two Color | Imperial Brown & Imperial Brown Microgrid**  
Solid • 50% Microgrid • 50%  
Checkerboard



**Two Color | Paonazzo & Amazonite Microgrid**  
Solid • 50% Microgrid • 50%  
Checkerboard

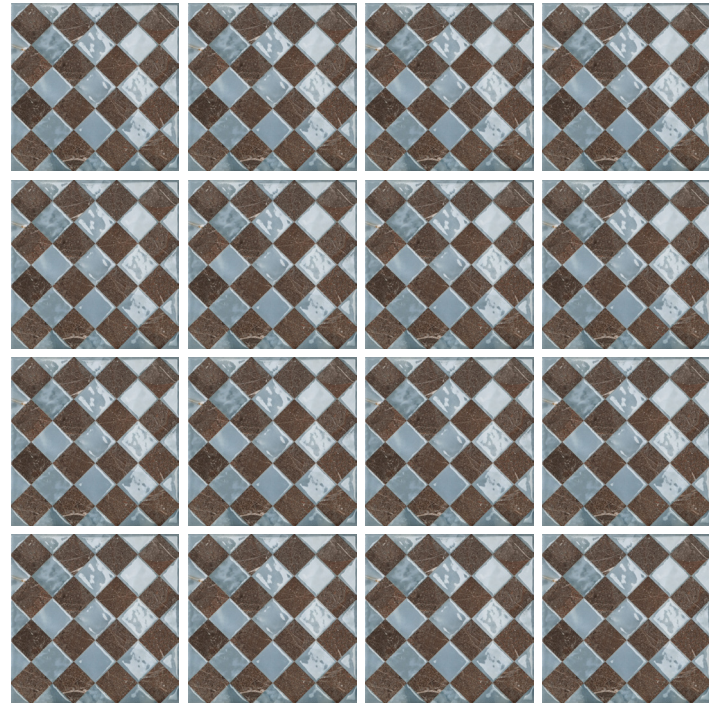
## Pattern Layout Examples



**One Color | Amazonite Macrogrid**

100%

Straight Lay



**One Color | Imperial Brown Macrogrid**

100%

Straight Lay

## Pattern Layout Examples



**Three Color | Blue Onyx, Imperial Brown & Macrogrid**

Color 1 Solid • 33% Color 2 Solid • 33% Macrogrid • 33%

Diagonal Checkerboard

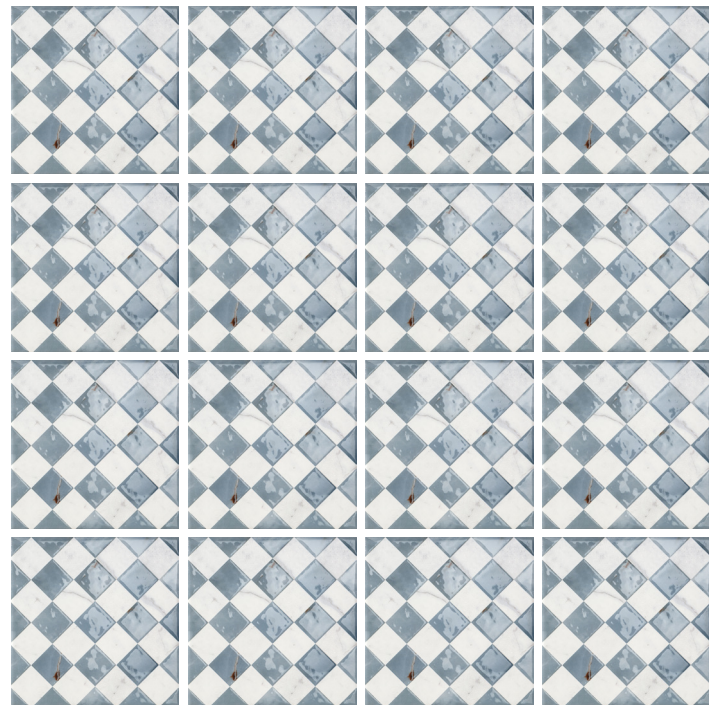


**Two Color | Blue Onyx & Statuario Macrogrid**

Solid • 50%

Macrogrid • 50%

Checkerboard



**One Color | Statuario Macrogrid**

100%

Straight Lay

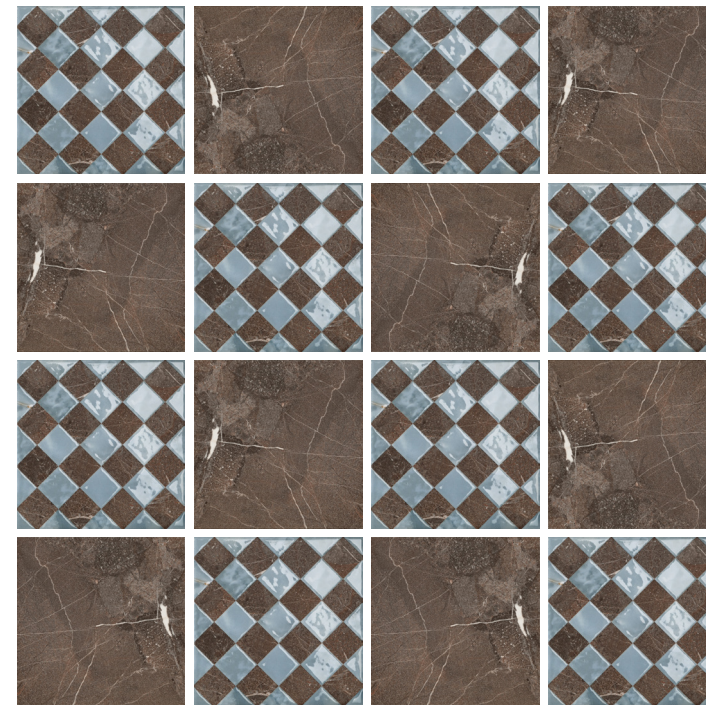


**Two Color | Blue Onyx & Imperial Brown Macrogrid**

Solid • 50%

Macrogrid • 50%

Checkerboard

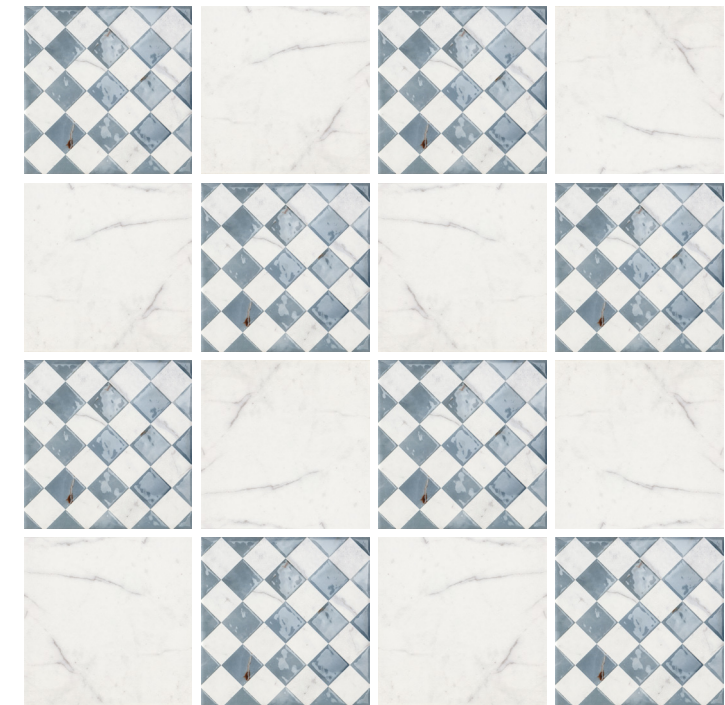


**Two Color | Imperial Brown & Imperial Brown Macrogrid**

Solid • 50%

Macrogrid • 50%

Checkerboard



**Two Color | Statuario & Statuario Macrogrid**

Solid • 50%

Macrogrid • 50%

Checkerboard

## Pattern Layout Examples



**One Color | Amazonite Triangle**

100%

Straight Lay



**One Color | Amazonite Triangle**

100%

Straight Lay - 45° Diagonal Grid



**One Color | Amazonite Triangle**

100%

Straight Lay - Alternating Rotation

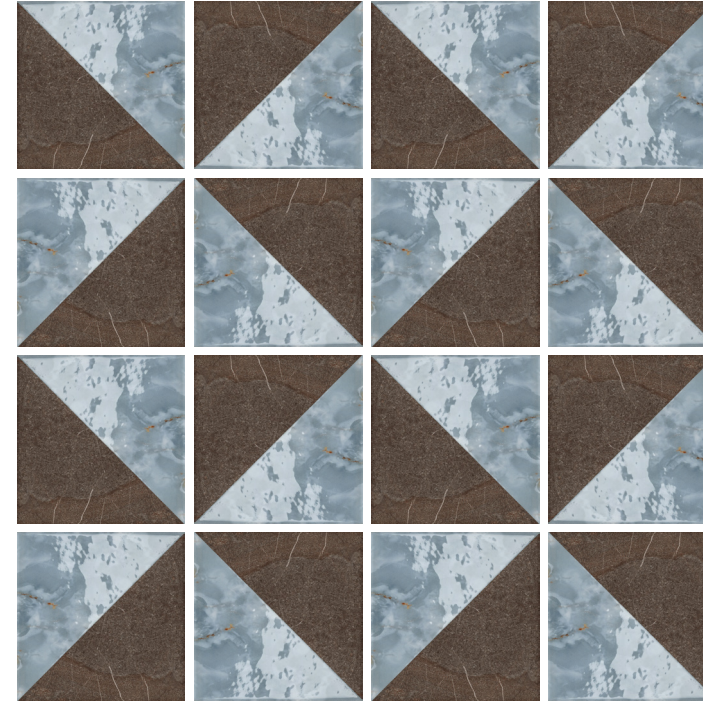


**One Color | Amazonite Triangle**

100%

Straight Lay - Quarter Turn

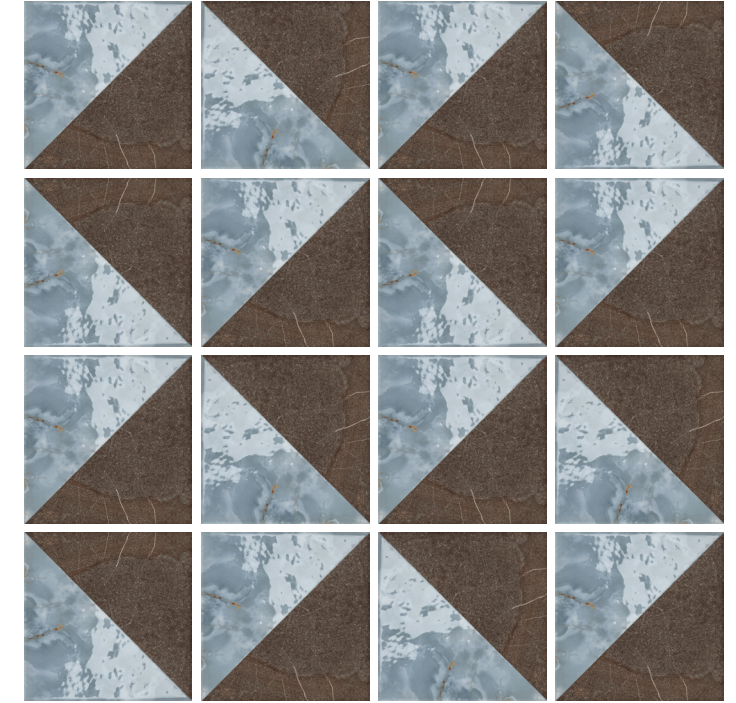
## Pattern Layout Examples



**One Color | Imperial Brown Triangle**

100%

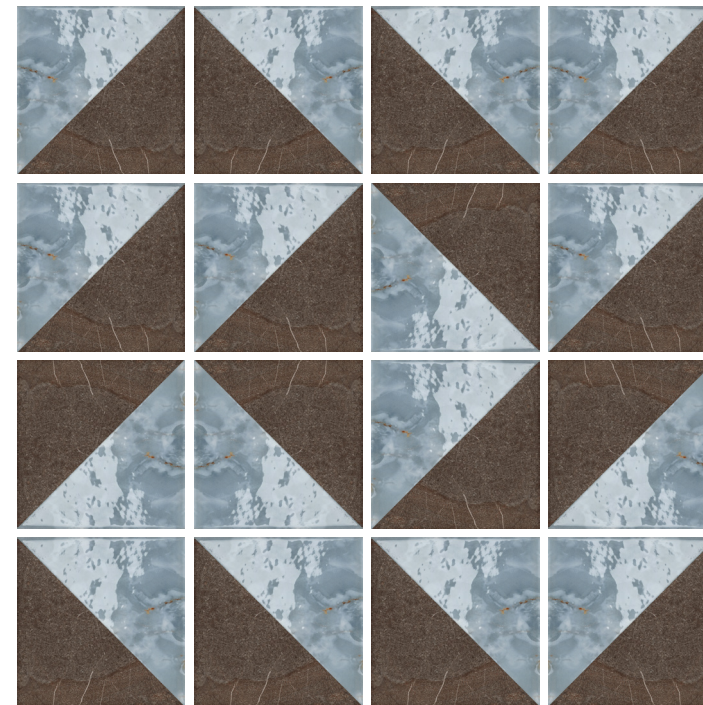
Straight Lay - 90° Diagonal Grid (Pinwheel)



**One Color | Imperial Brown Triangle**

100%

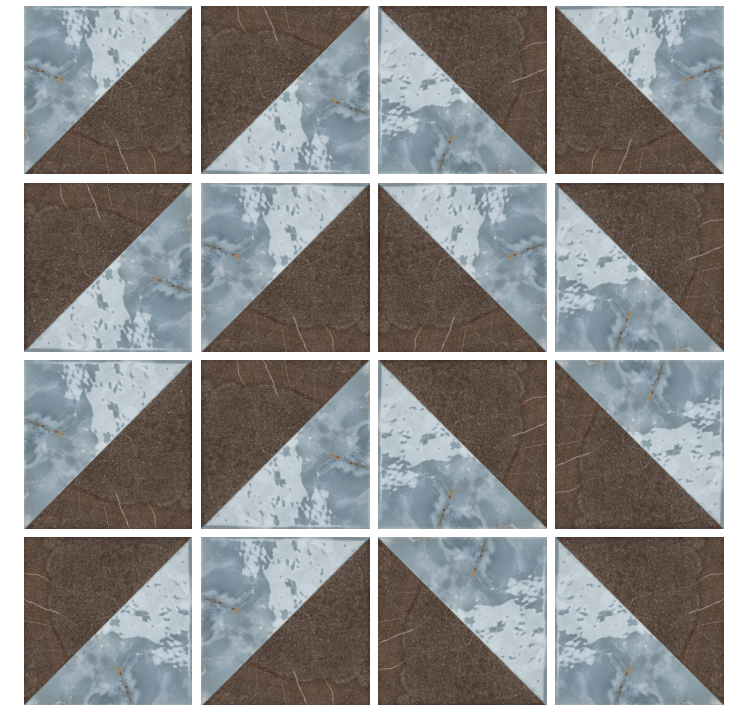
Straight Lay - Alternating Quarter Turn (Zig-Zag)



**One Color | Imperial Brown Triangle**

100%

Straight Lay - Random



**One Color | Imperial Brown Triangle**

100%

Straight Lay - Alternating Quarter Turn

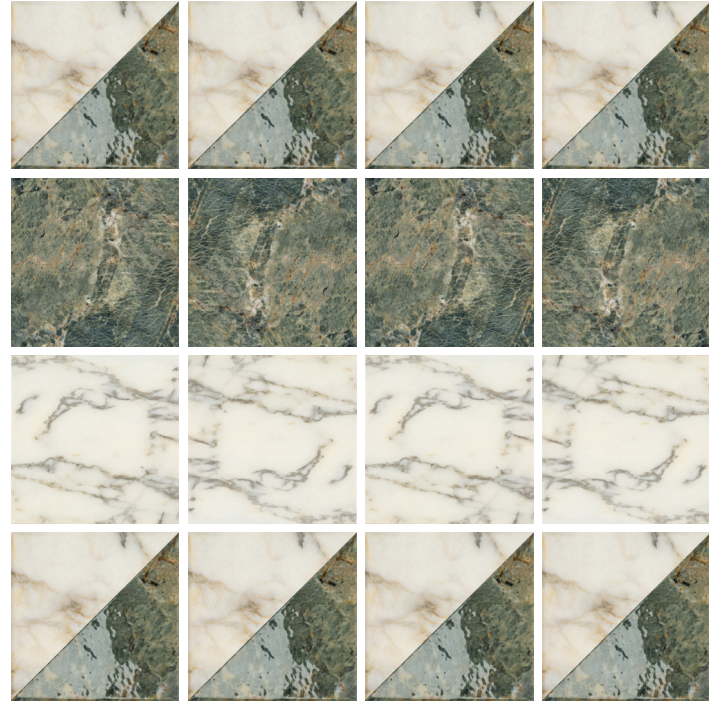
## Pattern Layout Examples



### Three Color | Amazonite, Triangle & Paonazzo

Triangle • 50%    Color 1 Solid • 25%    Color 2 Solid • 25%

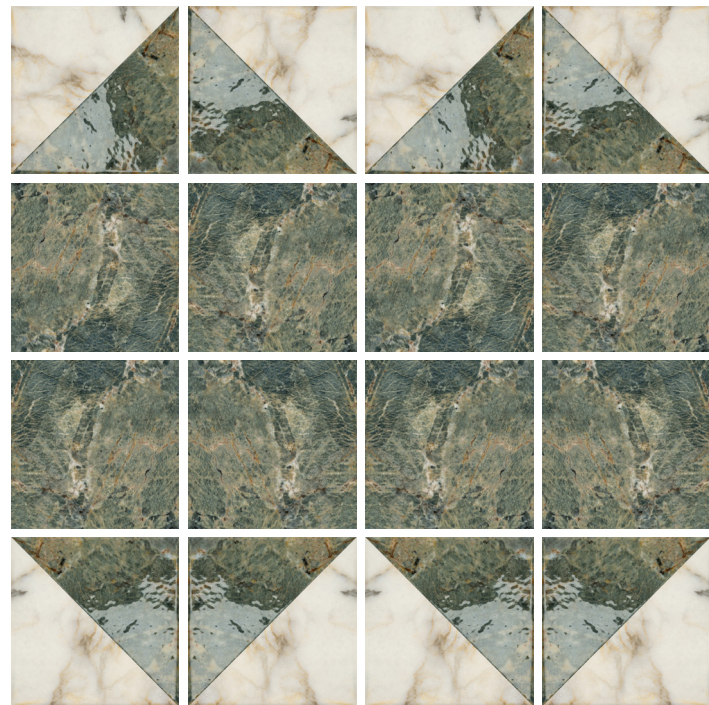
Straight Lay - Vertical Stripes



### Three Color | Amazonite, Triangle & Paonazzo

Triangle • 50%    Color 1 Solid • 25%    Color 2 Solid • 25%

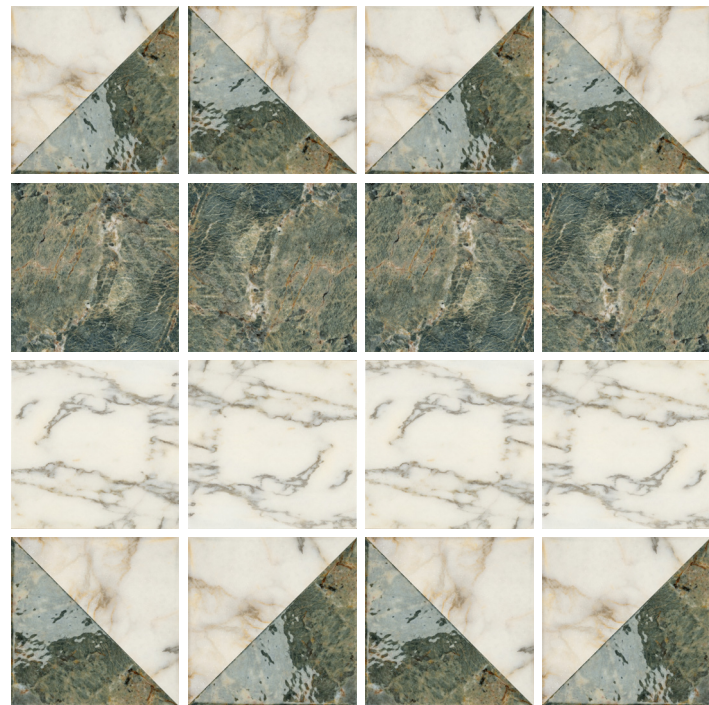
Straight Lay - Horizontal Stripes



### Two Color | Amazonite & Amazonite Triangle

Solid • 50%    Triangle • 50%

Straight Lay - Elongated Picket

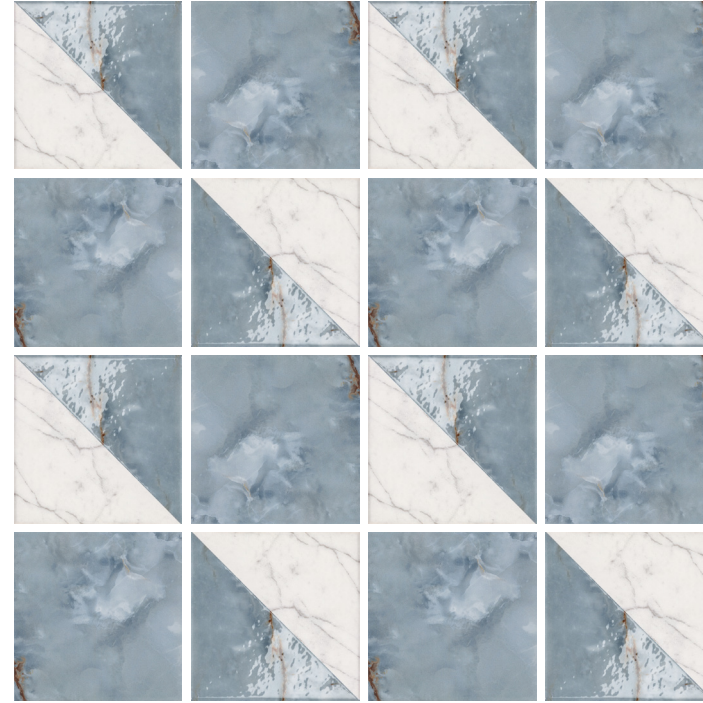


### Three Color | Amazonite, Triangle & Paonazzo

Triangle • 50%    Color 1 Solid • 25%    Color 2 Solid • 25%

Straight Lay - Alternating Elongated Picket

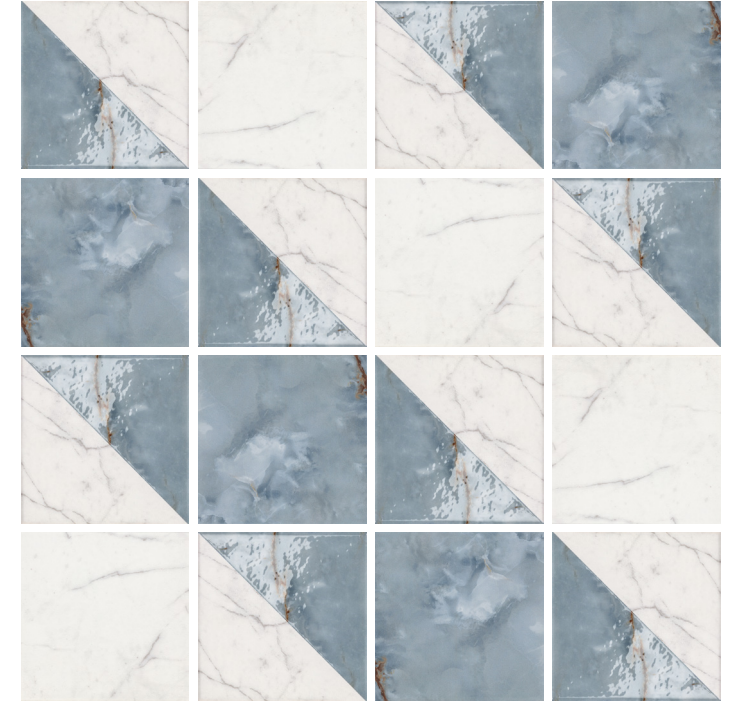
## Pattern Layout Examples



### Two Color | Blue Onyx & Statuario Triangle

Solid • 50%    Triangle • 50%

Straight Layout - Split - Diagonal Picket



### Three Color | Blue Onyx & Statuario, Triangle

Triangle • 50%    Color 1 Solid • 25%    Color 2 Solid • 25%

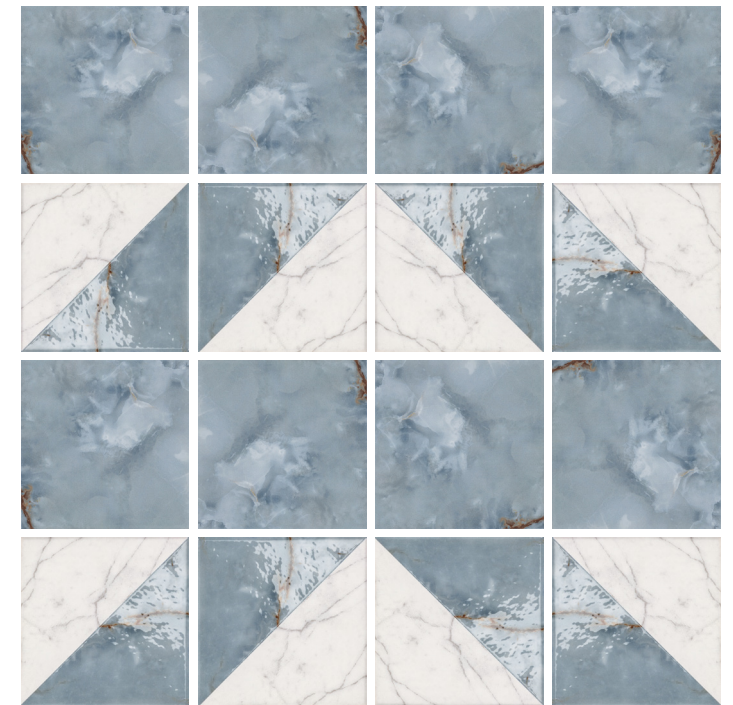
Straight Layout - Diagonal Stripes



### Two Color | Blue Onyx & Statuario Triangle

Solid • 50%    Triangle • 50%

Straight Layout - Checkerboard



### Two Color | Blue Onyx & Statuario Triangle

Solid • 50%    Triangle • 50%

Straight Layout - Alternating Horizontal Stripes

## Pattern Layout Examples



**One Color | Amazonite Axis**

100%

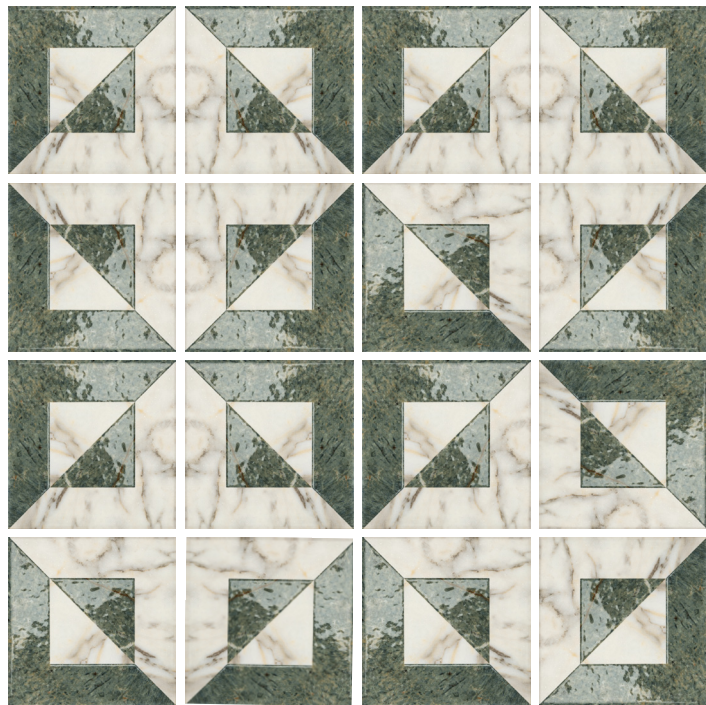
Straight Lay



**One Color | Amazonite Axis**

100%

Straight Lay - Alternating Quarter Turn



**One Color | Amazonite Axis**

100%

Straight Lay - Quarter Turn



**One Color | Amazonite Axis**

100%

Straight Lay - Alternating Row Rotation

## Pattern Layout Examples



**Two Color | Statuario & Statuario Axis**

Solid • 50%

Axis • 50%

Checkerboard

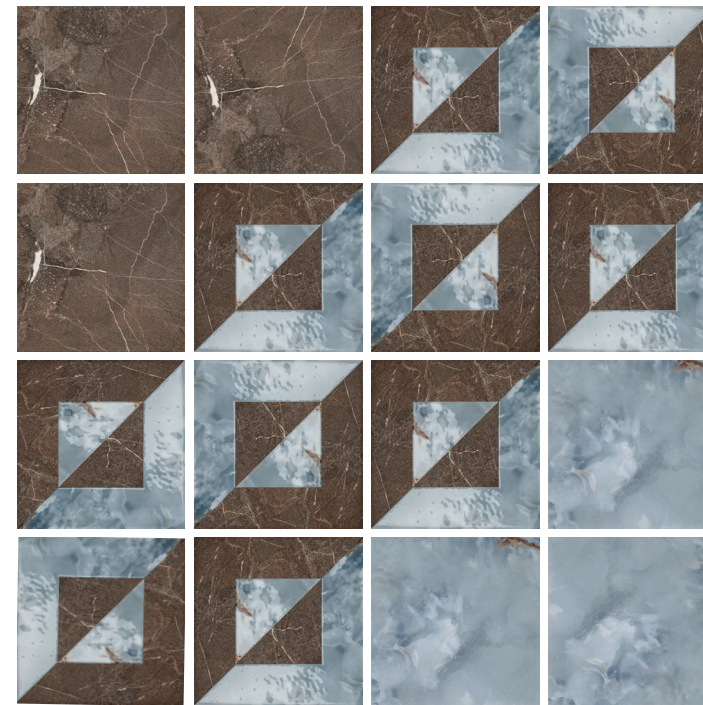


**Two Color | Blue Onyx & Statuario Axis**

Solid • 50%

Axis • 50%

Checkerboard



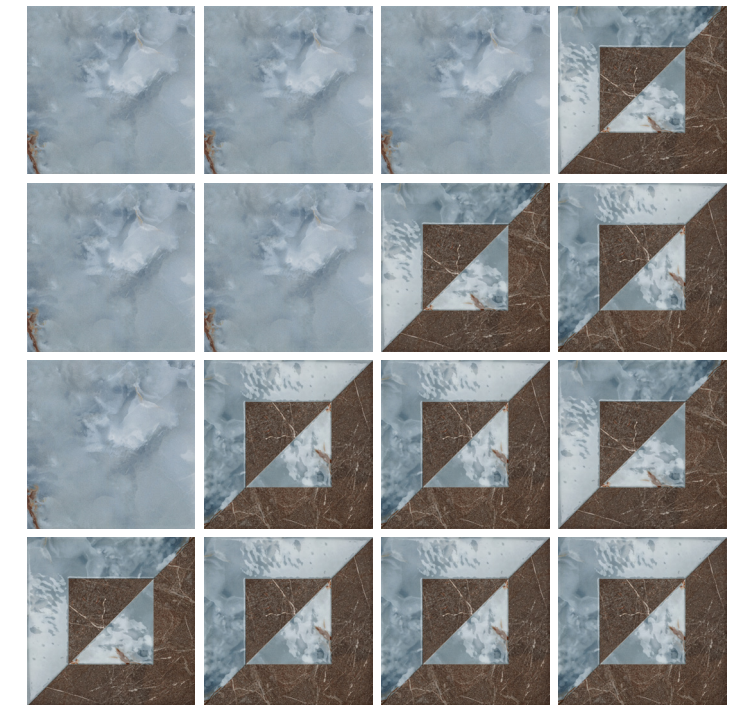
**Three Color | Blue Onyx, Imperial Brown & Axis**

Axis • 62.5%

Color 1 Solid • 18.75%

Color 2 Solid • 18.75%

Straight Lay - Stepped Diagonal



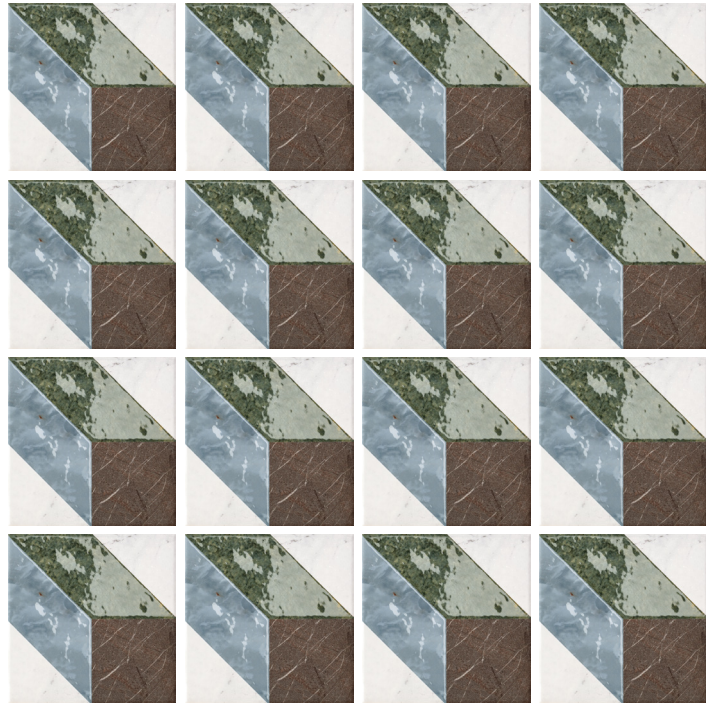
**Two Color | Blue Onyx & Imperial Brown Axis**

Solid • 50%

Axis • 50%

Straight Lay - Diagonal Split

## Pattern Layout Examples



**One Color | Array**

100%

Straight Lay



**One Color | Array**

100%

Straight Lay - Quarter Turn

## Pattern Layout Examples



**One Color | Array**

100%

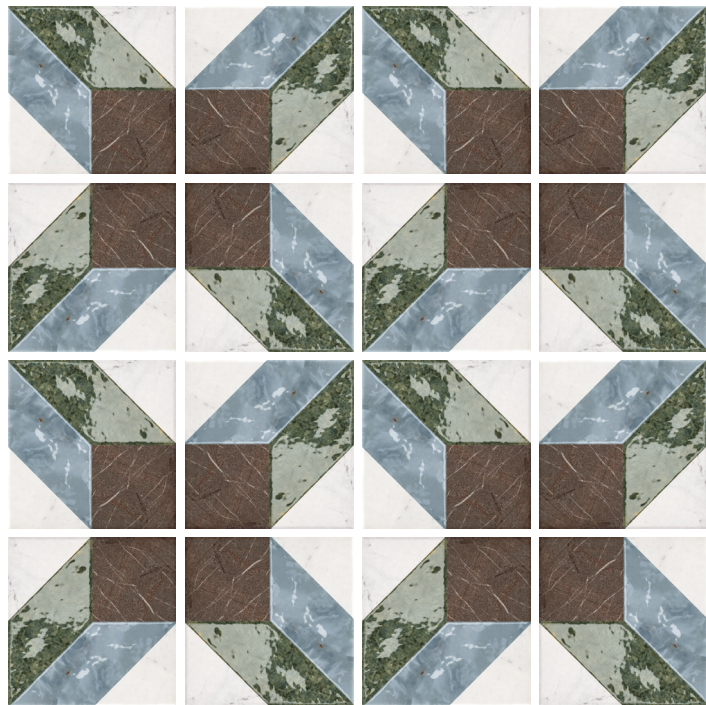
Straight Lay - Opposite Rows



**Two Color | Array & Statuario**

Array • 50%    Solid • 50%

Checkerboard



**One Color | Array**

100%

Straight Lay - Quarter Turn Quadrant



**One Color | Array**

100%

Straight Lay - Opposite X



**One Color | Array**

100%

Straight Lay - Braid



**One Color | Array**

100%

Straight Lay - X Row

# Pattern Layout Examples



**All Colors & Patterns**  
Straight Lay - Random

# Pattern Layout Examples



**Five Color | Amazonite, Array, Blue Onyx, Imperial Brown, Statuario**  
Array • 50% Amazonite • 12.5% Blue Onyx • 12.5% Imperial Brown • 12.5% Statuario • 12.5%  
Straight Lay - Modular X Medallion

# creative materials corporation

.....  
[www.creativematerialscorp.com](http://www.creativematerialscorp.com) | 800.207.2967 | [info@creativematerialscorp.com](mailto:info@creativematerialscorp.com)

